

REVISION: DATE: 10/17/06  
 CHANGE LOTS 1, 2, 16, 19 & COMMON AREAS

CALL TABLE C/L 30' PRIVATE ACCESS ROAD & UTILITY R/W

Course	Bearing	Distance
R13	N 09°25'37" W	11.35
R14	N 09°25'37" W	4.16
R15	N 09°25'37" W	21.28
R16	N 09°25'37" W	12.56
R17	N 09°25'37" W	12.56
R18	N 09°25'37" W	12.56
R19	N 09°25'37" W	12.56
R20	N 09°25'37" W	12.56
R21	N 09°25'37" W	12.56
R22	N 09°25'37" W	12.56
R23	N 09°25'37" W	12.56
R24	N 09°25'37" W	12.56
R25	N 09°25'37" W	12.56
R26	N 09°25'37" W	12.56
R27	N 09°25'37" W	12.56
R28	N 09°25'37" W	12.56
R29	N 09°25'37" W	12.56
R30	N 09°25'37" W	12.56
R31	N 09°25'37" W	12.56
R32	N 09°25'37" W	12.56
R33	N 09°25'37" W	12.56
R34	N 09°25'37" W	12.56
R35	N 09°25'37" W	12.56
R36	N 09°25'37" W	12.56
R37	N 09°25'37" W	12.56
R38	N 09°25'37" W	12.56
R39	N 09°25'37" W	12.56
R40	N 09°25'37" W	12.56
R41	N 09°25'37" W	12.56
R42	N 09°25'37" W	12.56
R43	N 09°25'37" W	12.56
R44	N 09°25'37" W	12.56
R45	N 09°25'37" W	12.56
R46	N 09°25'37" W	12.56
R47	N 09°25'37" W	12.56
R48	N 09°25'37" W	12.56
R49	N 09°25'37" W	12.56
R50	N 09°25'37" W	12.56
R51	N 09°25'37" W	12.56
R52	N 09°25'37" W	12.56
R53	N 09°25'37" W	12.56
R54	N 09°25'37" W	12.56
R55	N 09°25'37" W	12.56
R56	N 09°25'37" W	12.56
R57	N 09°25'37" W	12.56
R58	N 09°25'37" W	12.56
R59	N 09°25'37" W	12.56
R60	N 09°25'37" W	12.56
R61	N 09°25'37" W	12.56
R62	N 09°25'37" W	12.56
R63	N 09°25'37" W	12.56
R64	N 09°25'37" W	12.56
R65	N 09°25'37" W	12.56
R66	N 09°25'37" W	12.56
R67	N 09°25'37" W	12.56
R68	N 09°25'37" W	12.56
R69	N 09°25'37" W	12.56
R70	N 09°25'37" W	12.56
R71	N 09°25'37" W	12.56
R72	N 09°25'37" W	12.56
R73	N 09°25'37" W	12.56
R74	N 09°25'37" W	12.56
R75	N 09°25'37" W	12.56
R76	N 09°25'37" W	12.56
R77	N 09°25'37" W	12.56
R78	N 09°25'37" W	12.56
R79	N 09°25'37" W	12.56
R80	N 09°25'37" W	12.56
R81	N 09°25'37" W	12.56
R82	N 09°25'37" W	12.56
R83	N 09°25'37" W	12.56
R84	N 09°25'37" W	12.56
R85	N 09°25'37" W	12.56
R86	N 09°25'37" W	12.56
R87	N 09°25'37" W	12.56
R88	N 09°25'37" W	12.56
R89	N 09°25'37" W	12.56
R90	N 09°25'37" W	12.56
R91	N 09°25'37" W	12.56
R92	N 09°25'37" W	12.56
R93	N 09°25'37" W	12.56
R94	N 09°25'37" W	12.56
R95	N 09°25'37" W	12.56
R96	N 09°25'37" W	12.56
R97	N 09°25'37" W	12.56
R98	N 09°25'37" W	12.56
R99	N 09°25'37" W	12.56
R100	N 09°25'37" W	12.56

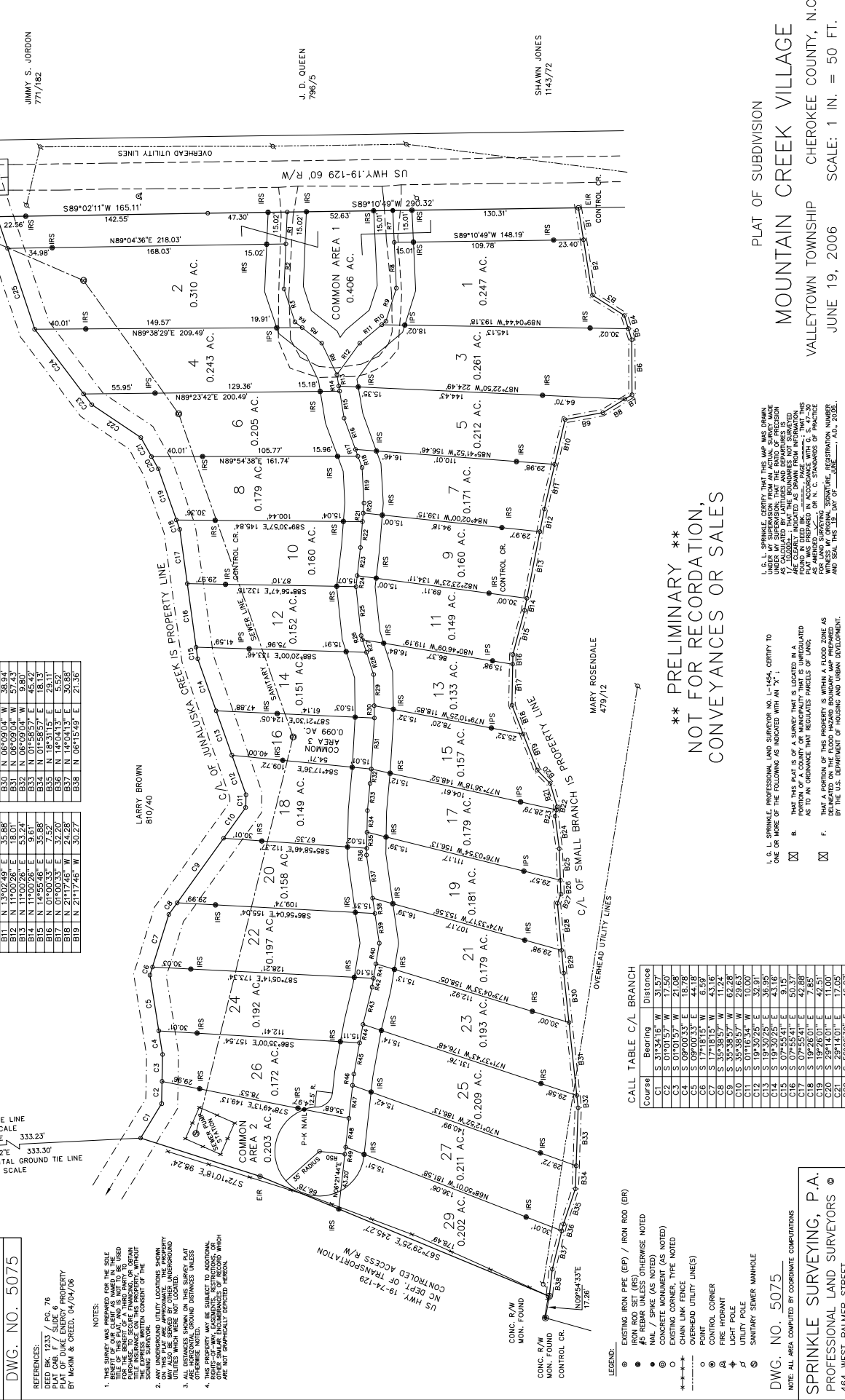
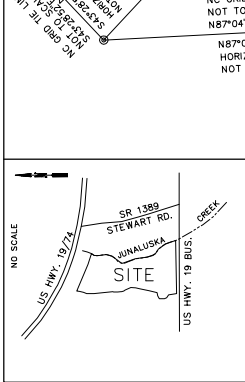
CALL TABLE C/L SMALL BRANCH

Course	Bearing	Distance
B1	N 09°10'25" W	25.27
B2	N 09°10'25" W	44.07
B3	N 09°10'25" W	10.85
B4	N 09°10'25" W	10.85
B5	N 09°10'25" W	9.13
B6	N 09°10'25" W	43.11
B7	N 09°10'25" W	43.11
B8	N 09°10'25" W	43.11
B9	N 09°10'25" W	43.11
B10	N 09°10'25" W	43.11
B11	N 09°10'25" W	43.11
B12	N 09°10'25" W	43.11
B13	N 09°10'25" W	43.11
B14	N 09°10'25" W	43.11
B15	N 09°10'25" W	43.11
B16	N 09°10'25" W	43.11
B17	N 09°10'25" W	43.11
B18	N 09°10'25" W	43.11
B19	N 09°10'25" W	43.11
B20	N 09°10'25" W	43.11
B21	N 09°10'25" W	43.11
B22	N 09°10'25" W	43.11
B23	N 09°10'25" W	43.11
B24	N 09°10'25" W	43.11
B25	N 09°10'25" W	43.11
B26	N 09°10'25" W	43.11
B27	N 09°10'25" W	43.11
B28	N 09°10'25" W	43.11
B29	N 09°10'25" W	43.11
B30	N 09°10'25" W	43.11
B31	N 09°10'25" W	43.11
B32	N 09°10'25" W	43.11
B33	N 09°10'25" W	43.11
B34	N 09°10'25" W	43.11
B35	N 09°10'25" W	43.11
B36	N 09°10'25" W	43.11
B37	N 09°10'25" W	43.11
B38	N 09°10'25" W	43.11
B39	N 09°10'25" W	43.11
B40	N 09°10'25" W	43.11
B41	N 09°10'25" W	43.11
B42	N 09°10'25" W	43.11
B43	N 09°10'25" W	43.11
B44	N 09°10'25" W	43.11
B45	N 09°10'25" W	43.11
B46	N 09°10'25" W	43.11
B47	N 09°10'25" W	43.11
B48	N 09°10'25" W	43.11
B49	N 09°10'25" W	43.11
B50	N 09°10'25" W	43.11
B51	N 09°10'25" W	43.11
B52	N 09°10'25" W	43.11
B53	N 09°10'25" W	43.11
B54	N 09°10'25" W	43.11
B55	N 09°10'25" W	43.11
B56	N 09°10'25" W	43.11
B57	N 09°10'25" W	43.11
B58	N 09°10'25" W	43.11
B59	N 09°10'25" W	43.11
B60	N 09°10'25" W	43.11
B61	N 09°10'25" W	43.11
B62	N 09°10'25" W	43.11
B63	N 09°10'25" W	43.11
B64	N 09°10'25" W	43.11
B65	N 09°10'25" W	43.11
B66	N 09°10'25" W	43.11
B67	N 09°10'25" W	43.11
B68	N 09°10'25" W	43.11
B69	N 09°10'25" W	43.11
B70	N 09°10'25" W	43.11
B71	N 09°10'25" W	43.11
B72	N 09°10'25" W	43.11
B73	N 09°10'25" W	43.11
B74	N 09°10'25" W	43.11
B75	N 09°10'25" W	43.11
B76	N 09°10'25" W	43.11
B77	N 09°10'25" W	43.11
B78	N 09°10'25" W	43.11
B79	N 09°10'25" W	43.11
B80	N 09°10'25" W	43.11
B81	N 09°10'25" W	43.11
B82	N 09°10'25" W	43.11
B83	N 09°10'25" W	43.11
B84	N 09°10'25" W	43.11
B85	N 09°10'25" W	43.11
B86	N 09°10'25" W	43.11
B87	N 09°10'25" W	43.11
B88	N 09°10'25" W	43.11
B89	N 09°10'25" W	43.11
B90	N 09°10'25" W	43.11
B91	N 09°10'25" W	43.11
B92	N 09°10'25" W	43.11
B93	N 09°10'25" W	43.11
B94	N 09°10'25" W	43.11
B95	N 09°10'25" W	43.11
B96	N 09°10'25" W	43.11
B97	N 09°10'25" W	43.11
B98	N 09°10'25" W	43.11
B99	N 09°10'25" W	43.11
B100	N 09°10'25" W	43.11

NC GRID STA. "BERKSHIRE"  
 N 17079.222 M  
 E 172774.863 M  
 MAD B3 47°06'11.60"  
 COMB. FACTOR 0.9997900

NC GRID STA. "STEWART"  
 N 171212.688 M  
 E 172546.811 M  
 MAD B3 47°06'11.60"  
 COMB. FACTOR 0.9997900

NC GRID TIE LINE  
 NOT TO SCALE  
 HORIZONTAL GROUND TIE LINE  
 NOT TO SCALE  
 333.30'  
 N87°04'12"E



NOTES:  
 1. THIS SURVEY WAS MADE FOR THE SOLE BENEFIT OF OUR CLIENT AS SHOWN IN THE PLAT. THE SURVEYOR HAS NO LIABILITY FOR THE ACCURACY OF THE SURVEY OR FOR THE REPAIR OF A THIRD PARTY TO OBTAIN TITLE INSURANCE ON THIS PROPERTY, WITHOUT SIGNING SURVEYOR.  
 2. ANY UNDERGROUND UTILITY LOCATIONS SHOWN ON THIS PLAT ARE BASED ON RECORDS AND MAY BE SUBJECT TO ADDITIONAL SURVEY. THE SURVEYOR HAS NO LIABILITY FOR THE ACCURACY OF THE RECORDS WHICH ARE NOT GRAPHICALLY DEPICTED HEREON.  
 3. ALL DISTANCES SHOWN ON THIS SURVEY PLAT ARE IN FEET AND DECIMALS THEREOF.  
 4. THIS PROPERTY MAY BE SUBJECT TO ADDITIONAL SURVEY. THE SURVEYOR HAS NO LIABILITY FOR THE ACCURACY OF THE RECORDS WHICH ARE NOT GRAPHICALLY DEPICTED HEREON.

LEGEND:  
 ○ EXISTING IRON PIPE (EPI) / IRON ROD (EIR)  
 ● IRON ROD SET (IRS)  
 ○ CHAIN LINK FENCE  
 ○ CONCRETE MONUMENT (AS NOTED)  
 ○ EXISTING CORNER, TYPE (NOTED)  
 ○ CHAIN LINK FENCE  
 ○ OVERHEAD UTILITY LINES(S)  
 ○ CONTROL CORNER  
 ○ FIRE HYDRANT  
 ○ LIGHT POLE  
 ○ UTILITY POLE  
 ○ SANITARY SEWER MANHOLE

DATE: 10/17/06  
 CHANGE LOTS 1, 2, 16, 19 & COMMON AREAS

CALL TABLE C/L 30' PRIVATE ACCESS ROAD & UTILITY R/W

CALL TABLE C/L SMALL BRANCH

CALL TABLE C/L BRANCH

LEGEND:

DWG. NO. 5075  
 NOTE: ALL AREA COMPUTED BY COORDINATE COMPUTATIONS

SPRINKLE SURVEYING, P.A.  
 PROFESSIONAL LAND SURVEYORS  
 464 WEST PALMER STREET  
 FRANKLIN, NORTH CAROLINA 28734  
 TEL. 828-524-5867 & 828-349-0917  
 & 828-389-3046 FAX: 828-524-7994  
 SURVEY BY MWR PLAT BY GLS

G. L. SPRINKLE, PROFESSIONAL LAND SURVEYOR NO. L-1444  
 MARY ROSENDALE 4/79/12

G. L. SPRINKLE, PROFESSIONAL LAND SURVEYOR NO. L-1444  
 MARY ROSENDALE 4/79/12

PLAT OF SUBDIVISION  
 MOUNTAIN CREEK VILLAGE  
 VALLEYTOWN TOWNSHIP CHEROKEE COUNTY, N.C.  
 JUNE 19, 2006 SCALE: 1 IN. = 50 FT.

GRAPHIC SCALE - FEET  
 0 50 100 150